

CAB-SIL-EC

IN LINE SUPER SILENT FAN WITH EC MOTOR



FIELD OF APPLICATION

CAB-SIL-EC fans are cabinet ventilation units acoustically insulated. They are ideal to exhaust or intake the air through circular ducts in installations as: public locals, offices, shops, bars, gym, laboratories, toilets, workshops, restaurants. The wide thickness of the sound proofing material surrounding the fan, the reduced overall dimensions, the speed adjustable high efficiency brushless EC motor are essential characteristics in any installation requiring high efficiency, reduced spaces or low noise level.

SERIES

This line consists of 5 models with spigot diameters from 125 up to 315 mm.

ARRANGEMENT

- Galvanized steel sheet casing with panels insulated with high density sound proofing material thickness 50mm.
- Circular spigots for duct mounting.
- Easy access panel.
- Double inlet, double width forward curved blade centrifugal fan.
- Single-phase electric motor high efficiency brushless EC IP44 (IP54 mod.315), with thermal protection, electronically 100% speed adjustable by means a potentiometer or external 0-10V signal.
- Terminal box protection class: IP55.

TECHNICAL DETAILS

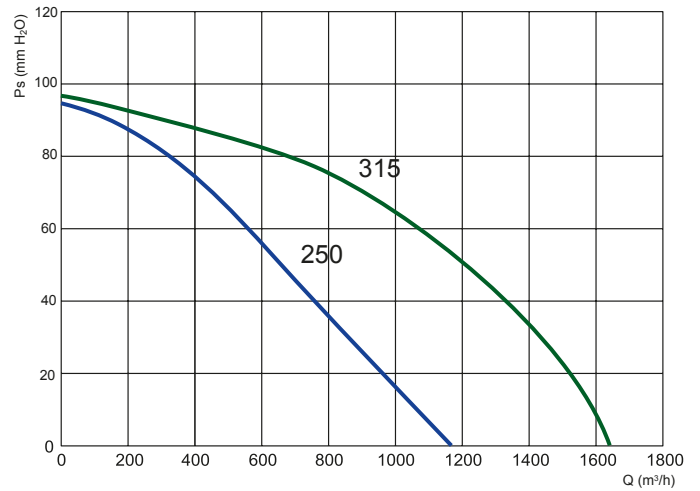
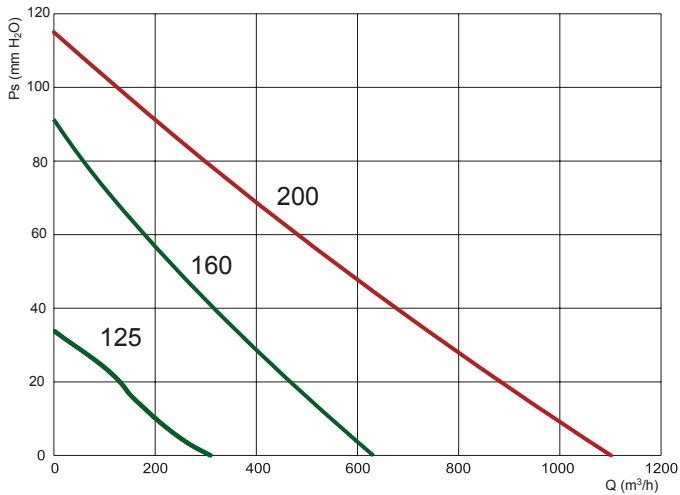
- Conveyed air: clean
- Air temperature: -20°C/+50°C
- Voltage: single-phase version (M) 230 - 240V - 1Ph - 50Hz

OPTIONALS

- **CON:** Speed controller 0-10V
- **SHT:** Butterfly shutter
- **HC:** Hose clamp
- **GR:** Protection grid
(mandatory for free air)

CAB-SIL-EC Performances

Performance shown in the selection diagrams refer to air at 15°C temperature and 0 mt a.s.l. altitude, and they were obtained in installation type "D" with no grid nor accessories.



Model	rpm	Pm (W)	In max (A)	Lp dB(A)	Speed Regulator
125 M	4480	53	0,4	47	CON10
160 M	3490	114	0,99	54	CON10
200 M	3380	195	1,45	58	CON10
250 M	3220	213	1,69	63	CON10
315 M	3400	400	3	65	CON10

Rpm= Nominal motor speed

Pm= Motor power.

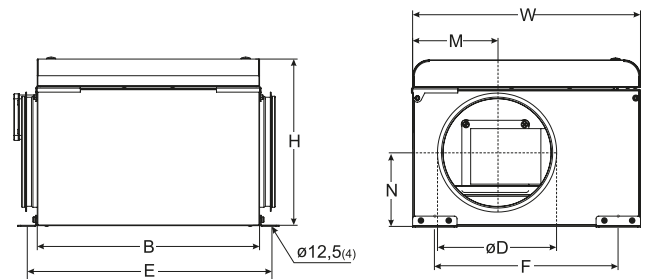
In=Absorbed current.

Lp= Sound pressure level is measured in free field at 1 m distance from the fan, with ducted inlet and outlet .

CAB-SIL-EC Dimensions

Model	B	W	H	M	N	D	E	F	Kg
125 M	400	410	325	205	165,5	125	440	330	12,3
160 M	550	485	340	149	193	160	590	405	19
200 M	600	545	425	170	259,3	200	640	465	25
250 M	600	545	425	194	234,5	250	640	465	25
315 M	437	595	475	297,5	238	315	477	515	31

Dimensions in mm



CAB-SIL-EC Accessories



CON CONTROLLER



SHT SHUTTER



HC HOSE CLAMP



GR GRID

All the ventilation units, according to EU Rule 1253/14, must be equipped with variable speed drive depending by motor type. For the suitable driver please refer to the technical documentation of the unit itself."

Tolerances: performances and sound power levels within the tolerances allowed by the DIN 24166 standard for Class 2.

Accessories

CAB-SIL

model	η_e [%]	category	N	VSD	Pe [kW]	Pt [mmH ₂ O]	q [m ³ /s]	kps
315 M	26,7	A-static	37,0	NO	0,239	22,30	0,29	1,00
355 M	36,3	A-static	44,1	NO	0,596	38,20	0,57	1,00
400 M	36,8	A-static	44,1	NO	0,696	50,90	0,50	1,00