

CAB-SIL

CENTRIFUGAL IN LINE SUPER SILENT FAN



FIELD OF APPLICATION

CAB-SIL fans are cabinet ventilation units acoustically insulated. They are ideal to exhaust or intake the air through circular ducts in installations as: public locals, offices, shops, bars, gym, laboratories, toilets, workshops, restaurants.

The wide thickness of the sound proofing material surrounding the fan, the reduced overall dimensions, the speed adjustable motor are essential characteristics in any installation requiring reduced spaces or low noise level.

SERIES

This line consists of 7 models with spigot diameters from 125 up to 400 mm.

ARRANGEMENT

- Galvanized steel sheet casing with panels insulated with high density sound proofing material thickness 50mm.
- Circular spigots for duct mounting.
- Easy access panel.
- Double inlet, double width forward curved blade centrifugal fan.
- Single-phase electric motor, IP44 or IP20, ISO B, with thermal protection, electronically speed adjustable.

TECHNICAL DETAILS

- Conveyed air: clean
- Air temperature: -20°C/+40°C
- Voltage:
single-phase version (M) 230 - 240V - 1Ph - 50Hz

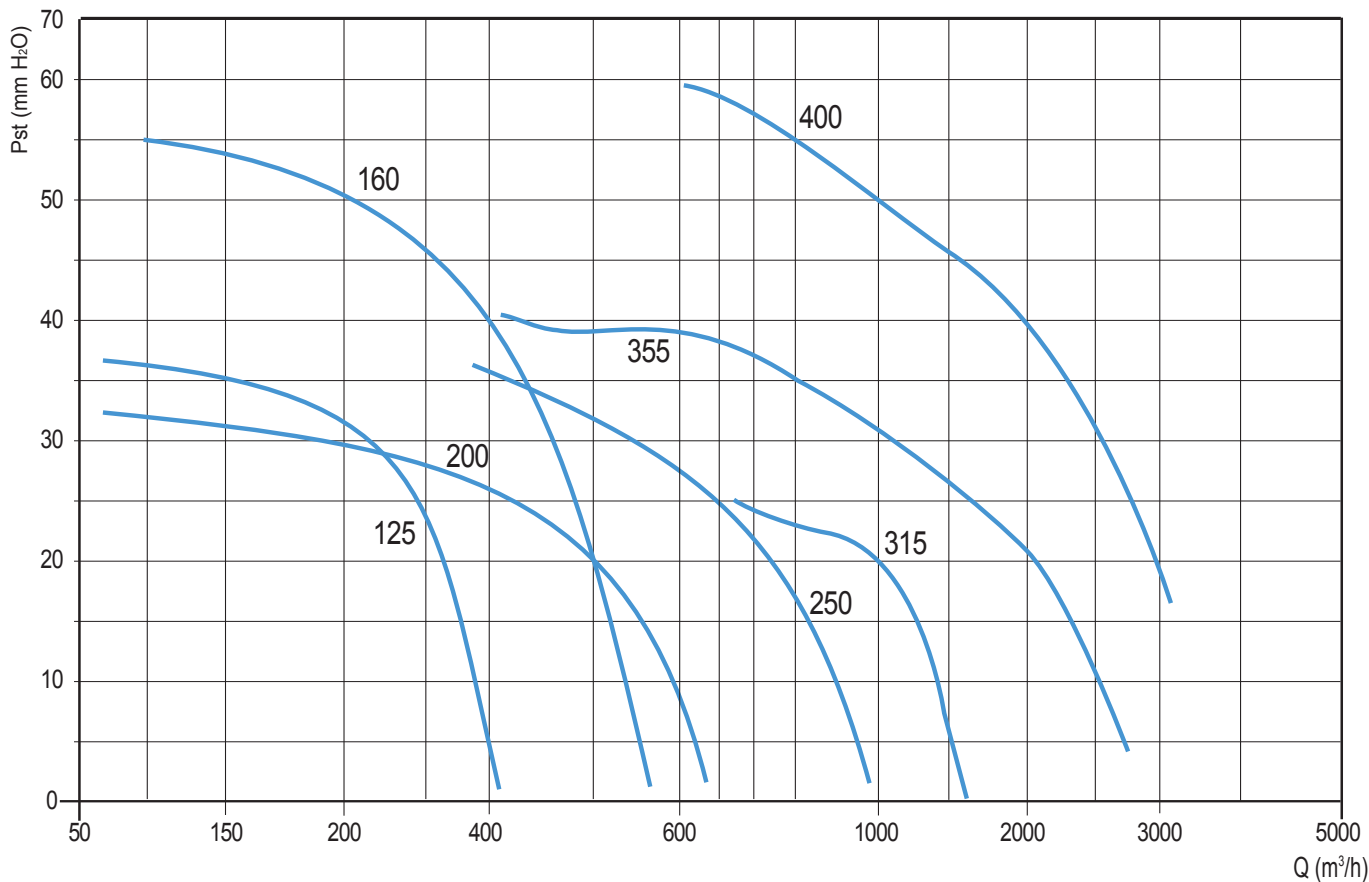
OPTIONALS

- Speed controllers (ESR / TSR-T)
- Butterfly shutters (SHT)
- Hose clamps (HT)
- Protection grid (accessory) mandatory for free air (GR)

CAB-SIL Performances

Performance shown in the selection diagrams refer to air at 15°C temperature and 0 mt a.s.l. altitude, and they were obtained in installation type "D" with no grid nor accessories.

ErP data see data sheets: pag. ? *except



"All the ventilation units, according to EU Rule 1253/14, must be equipped with variable speed drive depending by motor type. For the suitable driver please refer to the technical documentation of the unit itself"

Tolerances: performances and sound power levels within the tolerances allowed by the DIN 24166 standard for Class 2.

In case of EU installation use only for air changes in environments NOT solely occupied by persons (for example: professional kitchens, industrial and agricultural applications, machinery ventilation, OEM, data centers,...) * Only for non-Europeans market

Model	rpm	Pm (W)	In max (A)	Lp dB(A)	Speed controller
125 M	2480	120	0,5	27	ESR 1,5A / TSR-T 4A
160 M*	2647	270	1,2	33	ESR 1,5A / TSR-T 4A
200 M*	1550	160	0,7	29	ESR 1,5A / TSR-T 4A
250 M*	2082	265	1,1	35	ESR 1,5A / TSR-T 4A
315 M	1400	147	1,2	42	ESR 4A / TSR-T 4A
355 M	1400	420	3,7	46	ESR 7A / TSR-T 7A
400 M	1400	550	5	50	ESR 7A / TSR-T 7A

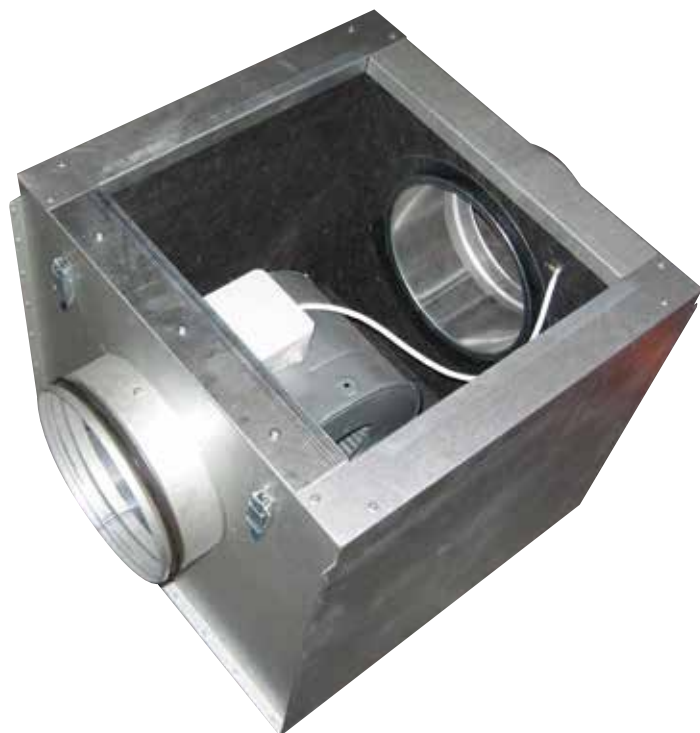
Model: single-phase (M) 230 - 240V - 1Ph - 50Hz

Rpm= Nominal motor speed

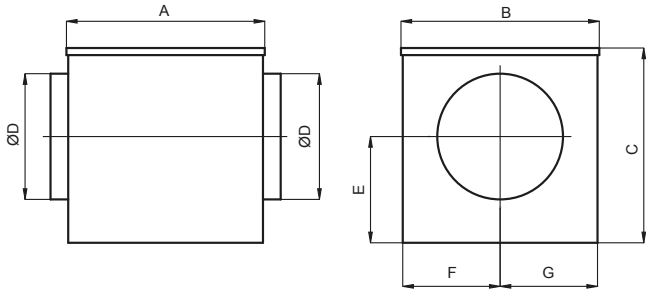
Pm= Motor power.

In= Absorbed current.

Lp= Sound pressure level is measured in free field at 3 m distance from the fan, with ducted inlet and outlet .



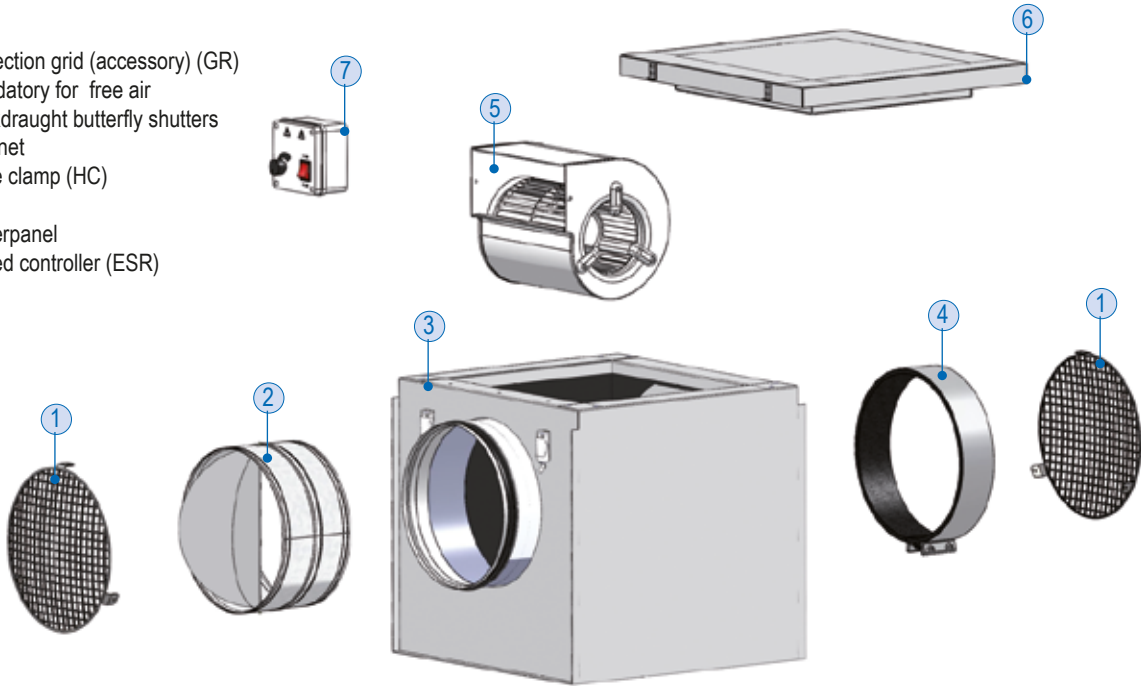
CAB-SIL Dimensions



Model	A	B	C	D	E	F	G	kg
125	400	410	300	125	171	277	133	14
160	400	410	300	160	142	148	262	15
200	444	444	420	200	251	222	222	18
250	444	444	420	250	221	222	222	19
315	550	550	550	315	300	275	275	39
355	550	550	550	355	300	275	275	41
400	650	650	650	400	380	325	325	60

Dimensions in mm

- 1 - Protection grid (accessory) (GR) mandatory for free air
- 2 - Backdraught butterfly shutters
- 3 - Cabinet
- 4 - Hose clamp (HC)
- 5 - Fan
- 6 - Coverpanel
- 7 - Speed controller (ESR)



CAB-SIL Accessories

HC HOSE CLAMP

To be used to connect the fan to the ducting.



SHT SHUTTER

Backdraught butterfly shutter



GR PROTECTION GRID

Required to prevent accidental contact with rotation parts. Mandatory for free air



CONTROLLERS

ESR SPEED CONTROLLER

